



The easiest and most versatile indoor and outdoor water resistant lighting solution - up to 440 lumen per meter.

Features

- Weather and water proof
- Easy installation
- Can be cut and reconnected every 180mm pitch

Benefits

- Conform to IP65 waterproof standard
- Suitable for various mounting methods
- Perfect for long length application



Specifications

Specifications		Flexi-Pro 8000 HB Strip	
Product Name	Flexi-Pro 8000 HB Strip		
Model	C8K-A0-XXM3B	C8K-A0-XXM3B	
Part No.	4037283011	4037653011	
Color	Warm White	Daylight	
Color Temp (CCT)	2800K	6500K	
Color Rendering Index (CRI)	80Ra	72Ra	
Input Voltage	24V DC		
Rated Current (per meter)	280mA		
Total Power (per meter)	6.7W		
Lumen Output (per meter)	400lm	400lm	
Lumen Efficacy	60 lm/W	60 lm/W	
Radiation Angle	110°		
Min. Bending Radius	100mm		
Max. Connection Length	10m		
Life Span	35,000hrs		
Operating Temperature	-20°C ~ +50°C		
Storage Temperature	-25°C ~ +60°C		
Max. Loading Force	10kg		
Flammability	Flame Retardant		
Application	Indoor / Outdoor		
IP Rating	IP20 / IP65 / Max. IP68		
Dimmable	Yes (1-10V)		
RoHS	Yes		
Packing	10m per reel		

Mechanical

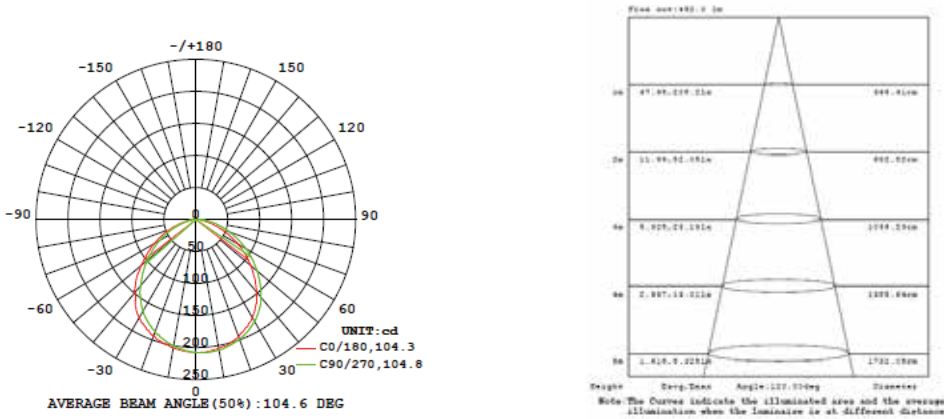
Dimension	12mm (W) x 5.5mm (H)
Segment Cut Length	180mm
Number of LEDs	6 LEDs per segment
LED Pitch	30mm
Weight	100 g/m
Material	UV / IR Protected, RoHS Compliant



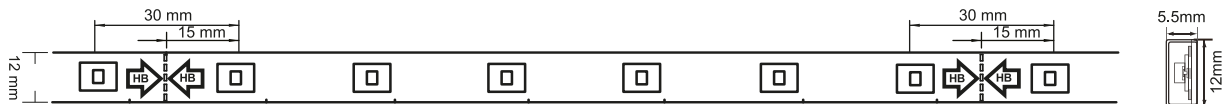
- Applications
- Gardens
 - Facade lighting
 - Outdoor lighting for patios

CABLED® SERIES

Luminous Intensity and Distribution Diagram



Actual Product Picture and Dimensions



- 24V DC
- 6.7 W per meter
- Operating Temp -20°C ~ 50°C
- RoHS
- up to 35,000 hours
- CE
- UL
- IP65
- ErP

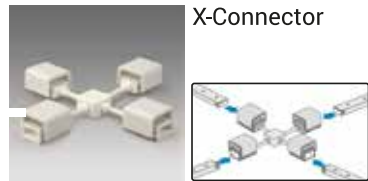
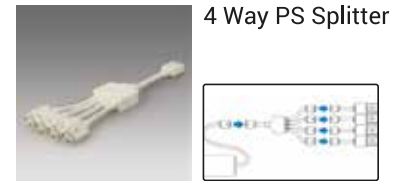
Accessories For Flexi-Pro 8000 HB



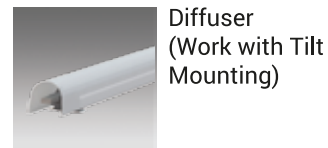
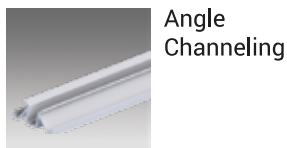
Light Engine

Bonding, linking, extending and adapting are the principal functions of the wide series of accessories which enhance the versatility of **CABLED®**.

Connectors



Mountings

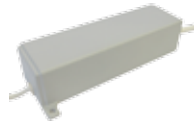


CABLED® SERIES

LED Driver & Inline Dimmer For Flexi-Pro 8000 HB



LED driver for CABLED®



Specifications				
Product Name	LED Driver 24V DC 18W	LED Driver 24V DC 30W	LED Driver 24V DC 60W	LED Driver 24V DC 100W
Input Voltage	100-240V AC			
Rated Current	0.3A	0.3A	0.4A	0.6A
Rated Frequency	50/60 Hz			
Output Voltage	24V DC			
Output Current	0.75A Max.	1.25A Max.	2.5A Max.	4.16A Max.
Total Power Output	18W Max.	30W Max.	60W Max.	100W Max.
Efficiency	80%		82%	
Power Factor	> 0.8	> 0.9	> 0.9	> 0.9
Operating Temperature	-20°C ~ +50°C			
Driving Length Flexi-Pro 8000 HB	≤ 2.5m	≤ 4m	≤ 8.5m	≤ 10m
Driving Length 2000SF	4W	≤ 4.5m	≤ 7.5m	≤ 15m
	6W	≤ 3m	≤ 5m	≤ 10m
6000MC	≤ 1.6m	≤ 3m	≤ 6m	≤ 10m
IP Rating	IP67			
Dimension (L x W x H)	120 x 35 x 28 mm	148 x 46.5 x 35 mm	185 x 53 x 40 mm	185 x 53 x 40 mm
Packing	Pack of 1			

CABLED® SERIES



Dimming solution for CABLED®

Inline Dimmer



Product Name	Inline Dimmer
Input Voltage	24V DC
Standby Current	15mA
Input / Output Current (Max.)	4.2A
Input / Output Power (Max.)	100W
Operating Temperature	-20°C ~ +50°C
Storage Temperature	0°C ~ 80°C
Application	Indoor / Outdoor
IP Rating	IP65
Dimension (L x W x H)	78.5 x 50 x 23 mm
Packing	Pack of 1



Wiring diagram example

