

CABLED® - Flexi-Pro 8000 HB



Light Engine

The easiest and most versatile indoor and outdoor water resistant lighting solution - up to 440 lumen per meter.

Features

- Weather and water proof
- Easy installation
- Can be cut and reconnected every 180mm pitch

Benefits

- Conform to IP65 waterproof standard
- Suitable for various mounting methods
- Perfect for long length application



* Premold custom-made connector for IP68 is available.

CABLED® SERIES

Specifications

Specifications	
Product Name	Flexi-Pro 8000 HB Strips
Color	2800K 6500K
Color Temp (CCT)	Warm White Daylight
Color Rendering Index (CRI)	80 Ra 72 Ra
Input Voltage	24V DC
Rated Current (per meter)	278mA
Lumen Output (per meter)	400lm 440lm
Total Power (per meter)	6.7W
Lumen Efficacy	60lm/W 66lm/W
Radiation Angle	110°
Min. Bending Radius	100mm
Max. Connection Length	10m
Life Span	35000 hrs
Operating Temperature	-20°C ~ +50°C
Storage Temperature	-25°C ~ +60°C
Max. Loading Force	10kg
Flammability	TPU jacket, flame retardant
Application	Indoor/ Outdoor
IP Rating	IP20/IP65/ Max IP68
Dimmable	Yes (with Inline Dimmer)
RoHS	Yes

Mechanical

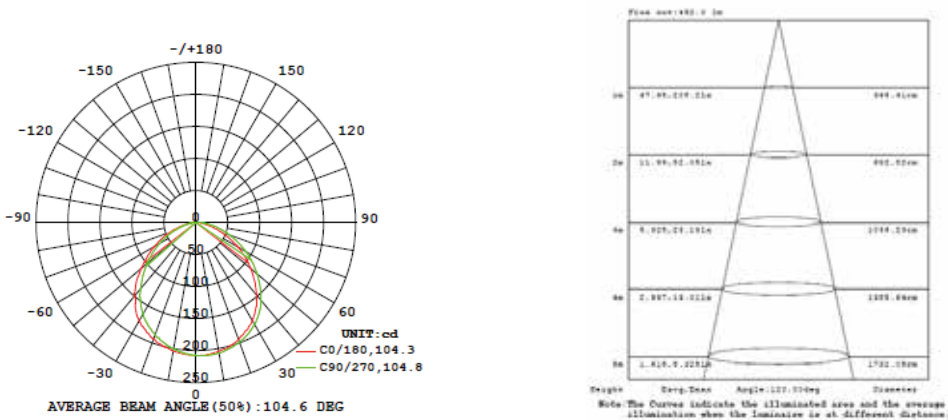
Dimension	12mm(W) x 5.5mm(H)
Segment Cut Length	180mm
Number of LEDs	6 LEDs per Segment
LED Pitch	30mm
Weight	100 g/m
Material	UV / IR protected TPU, RoHS Compliant



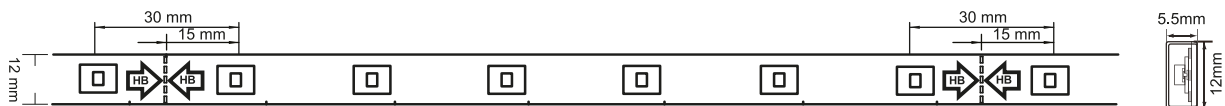
- Applications
- Gardens
 - Facade lighting
 - Outdoor lighting for patios

CABLED® SERIES

Luminous Intensity and Distribution Diagram



Actual Product Picture and Dimensions



- 24V DC
- 6.7 W per meter
- Operating Temp -20°C ~ 50°C
- RoHS
- up to 35,000 hours
- CE
- UL
- IP65
- ErP

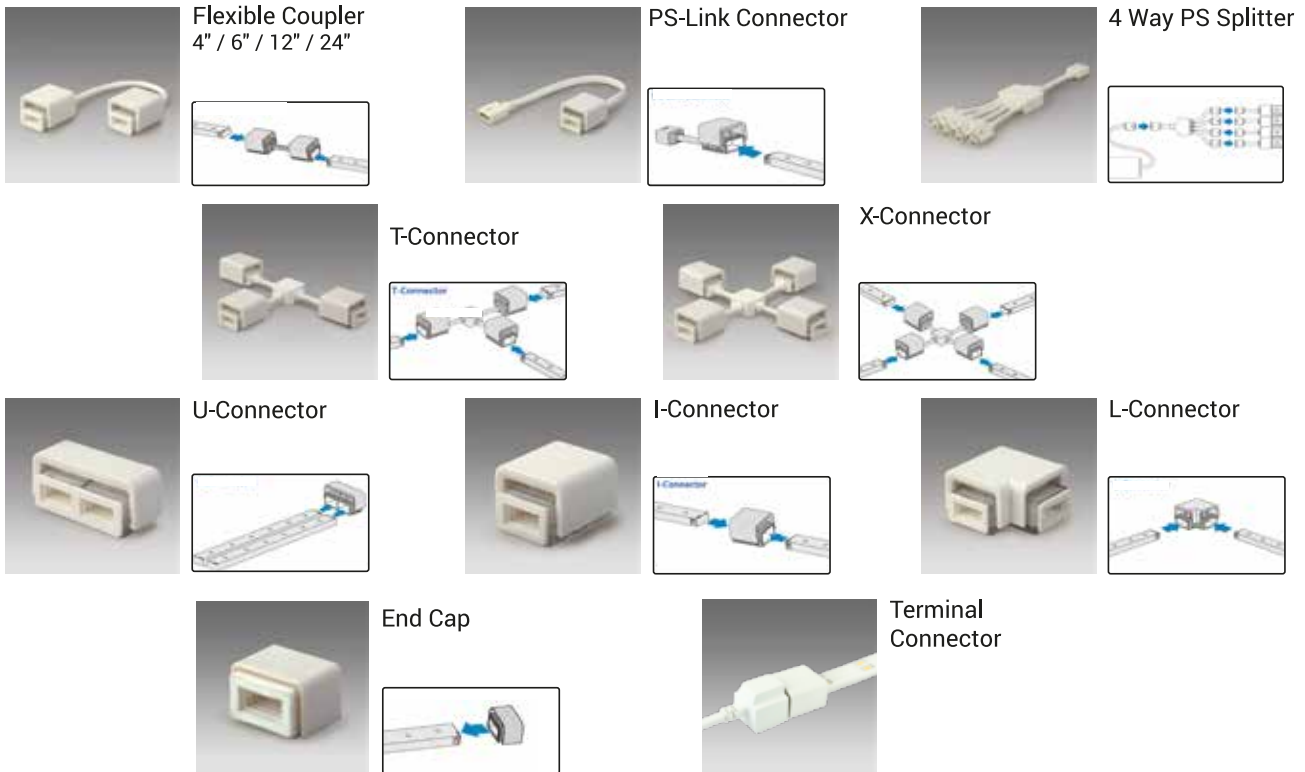
Accessories For Flexi-Pro 8000 HB



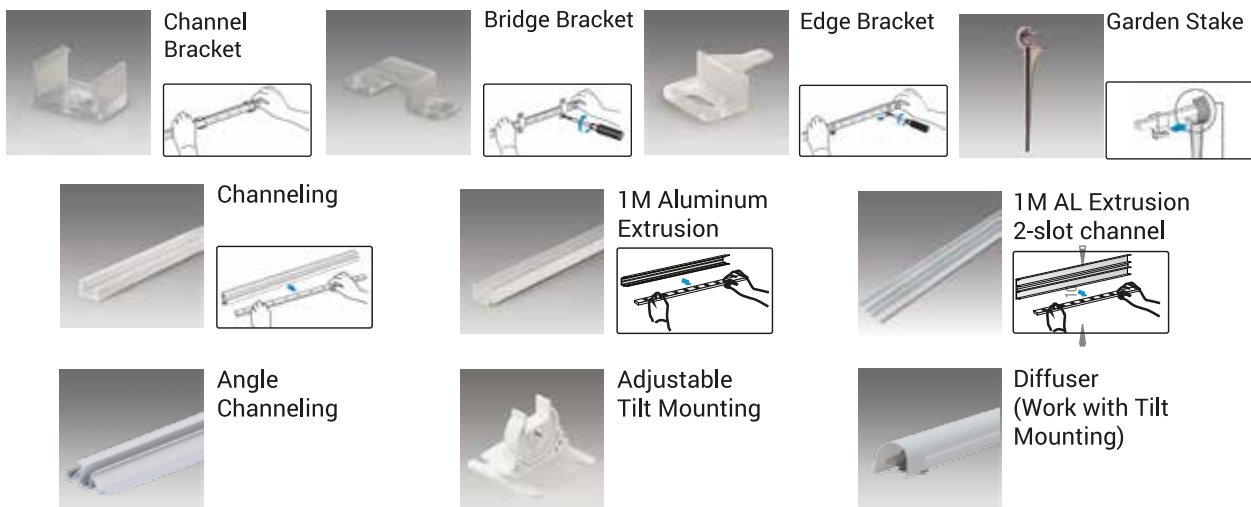
Light Engine

Bonding, linking, extending and adapting are the principal functions of the wide series of accessories which enhance the versatility of **CABLED®**.

Connectors



Mountings

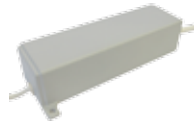


CABLED® SERIES

LED Driver & Inline Dimmer For Flexi-Pro 8000 HB



LED driver for cABLED®



Specifications				
Product Name	LED Driver 24V DC 18W	LED Driver 24V DC 30W	LED Driver 24V DC 60W	LED Driver 24V DC 100W
Input Voltage	100-240V AC			
Rated Current	0.3A	0.3A	0.4A	0.6A
Rated Frequency	50/60 Hz			
Output Voltage	24V DC			
Output Current	0.75A Max.	1.25A Max.	2.5A Max.	4.16A Max.
Total Power Output	18W Max.	30W Max.	60W Max.	100W Max.
Efficiency	80%		82%	
Power Factor	> 0.8	> 0.9	> 0.9	> 0.9
Operating Temperature	-20°C ~ +50°C			
Driving Length Flexi-Pro 8000 HB	≤ 2.5m	≤ 4m	≤ 8.5m	≤ 10m
Driving Length 2000SF	4W	≤ 4.5m	≤ 7.5m	≤ 15m
	6W	≤ 3m	≤ 5m	≤ 10m
6000MC	≤ 1.6m	≤ 3m	≤ 6m	≤ 10m
IP Rating	IP67			
Dimension (L x W x H)	120 x 35 x 28 mm	148 x 46.5 x 35 mm	185 x 53 x 40 mm	185 x 53 x 40 mm
Packing	Pack of 1			

cABLED® SERIES



Dimming solution for cABLED®

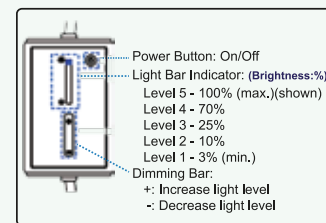
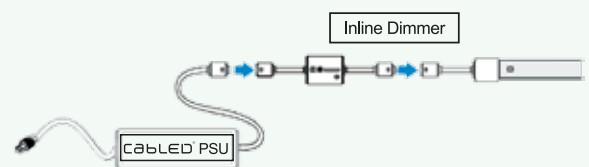
Inline Dimmer



Product Name	Inline Dimmer
Input Voltage	24V DC
Standby Current	15mA
Input / Output Current (Max.)	4.2A
Input / Output Power (Max.)	100W
Operating Temperature	-20°C ~ +50°C
Storage Temperature	0°C ~ 80°C
Application	Indoor / Outdoor
IP Rating	IP65
Dimension (L x W x H)	78.5 x 50 x 23 mm
Packing	Pack of 1



Wiring diagram example



Wiring Diagram for Inline Dimmer